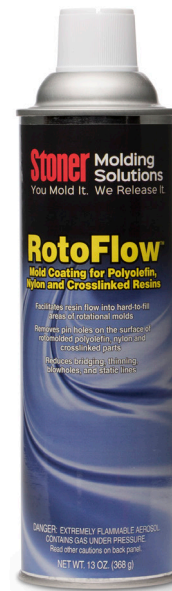


Stoner® RotoFlow® Helps Reduce Scrap by 40%

RotoFlow® was developed to solve quality and production challenges that many rotational molding professionals face reaching the inserts, tight radii, threads, and deep cavities of hard-to-fill parts.

RotoFlow® increases the flow of polyolefin and nylon resins into these difficult areas producing a fully molded part and nearly eliminating voids, pinholes, bridging, thinning, and static lines on the surface.



Nonfood Compounds
Program Listed P1
161428



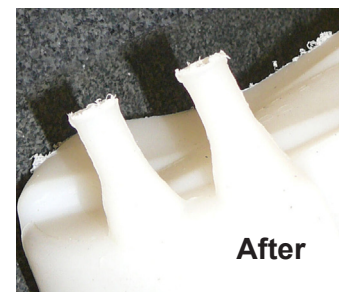
Stoner® RotoFlow® is popular with Kayak manufacturers because it improves part quality and saves time and money.

Molders Prefer Stoner® RotoFlow® Because it:

- saves time and money.
- improves part quality.
- removes pinholes, voids, and blow outs.
- improves appearance quality.
- improves performance of threads.
- increases the strength of inserts.
- NSF® approval for use in food-grade plastic molding.
- contains no CFC or HCFC propellants.
- contains no chlorinated solvents.



Before



After

Example: Nylon 6 Reservoir tank tip.